



JA PCM strengthens the personalised cancer medicine network across Europe

Our Mission

Supporting the ambitions of the EU Beating Cancer Plan, our mission is to leverage the potential of PCM (Personalised Cancer Medicine) within Europe by **increasing access to and knowledge of PCM in Europe, to be widely accessible to all patients in need.**

Our Vision

A lifespan, person-centred approach, and looking from multiple perspectives: from the **healthy individual, the cancer patient, to the survivors.**

Key Actions

To create a European network for cross-border PCM collaboration, and to develop methodologies and tools that can help member states to give access to **personalised prevention, diagnosis, treatment and follow-up.**

Our Ambition

To facilitate and drive the **equitable and sustainable implementation of PCM** within Europe.

The Project

EU4Health co-funded project - € 31.6 Million overall budget
Nov 2025 - Nov 2029

Consortium

29 countries
145 partners

Synergies

Patient's views will be embedded through our partner project SPARC (Support of Personalised Medicine Approaches in Cancer). In parallel, JA PCM will actively align and collaborate with key EU initiatives to integrate actions, outcomes, and proposals to maximise shared impact.



Stakeholder Impact

Healthcare professionals & researchers

- gain competence in personalised cancer medicine;
- improve diagnostic and treatment capabilities;
- contribute to evidence generation and collaborative data sharing.

Cancer patients

- benefit from more personalised care;
- active involvement in decision-making;
- improved outcomes.

Citizens

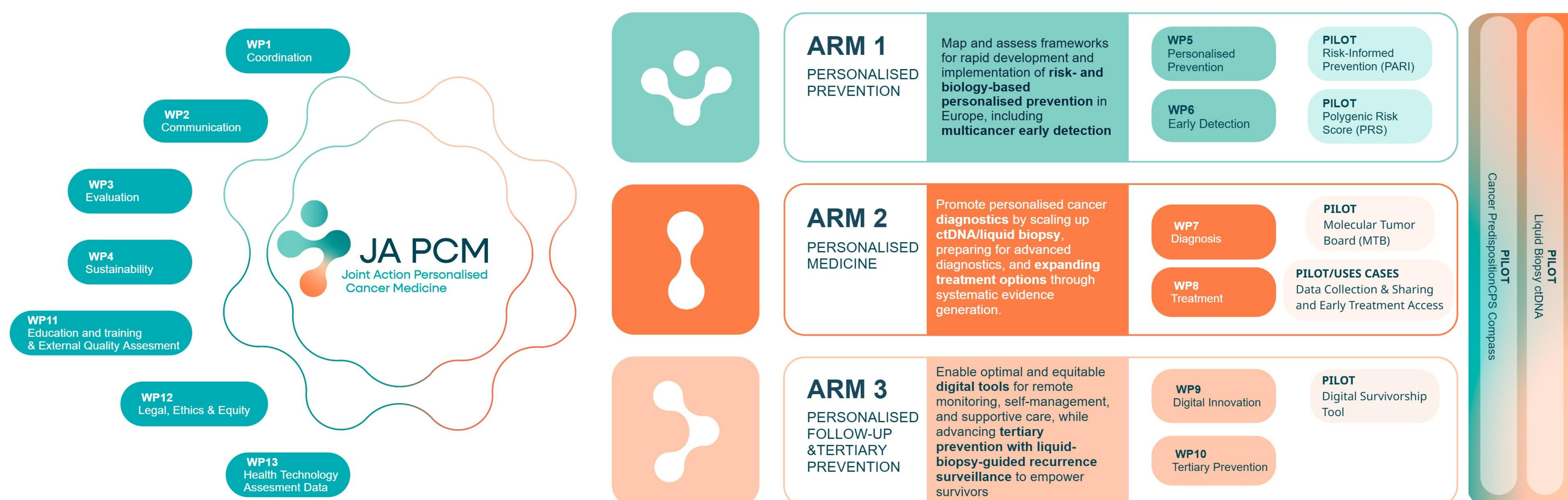
- gain awareness of cancer prevention, informed decision-making skills;
- earlier access to risk assessment, especially for at-risk groups.

Healthcare policymakers

- align national policies with EU PCM goals;
- use pilot evidence;
- support more efficient, equitable healthcare systems;
- reduce the cancer burden across populations.

Action plan

The **patient journey** is addressed through **three “arms”**, each consisting of two **technical work packages** (WP) and supported by one or more dedicated **pilot applications**. In addition, two transversal pilots cover all arms and **seven transversal WPs** provide overarching support for the technical WPs and pilots.



Seven concrete pilots



Pathway, access, and implementation of **risk-informed cancer prevention** across Europe
Developing and testing care pathways that adapt cancer prevention strategies to individual risk profiles

Implementation readiness for **polygenic risk scores** in screening

Exploring how genetic information can help better estimate cancer risk and inform prevention.



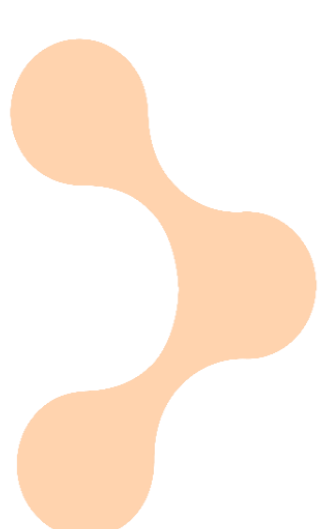
Supranational **molecular tumour board** for complex cases/countries without MTB

Strengthening the use of molecular data to support clinical decision-making in multidisciplinary tumour board meetings

Continuous **data collection** via a federated sharing platform

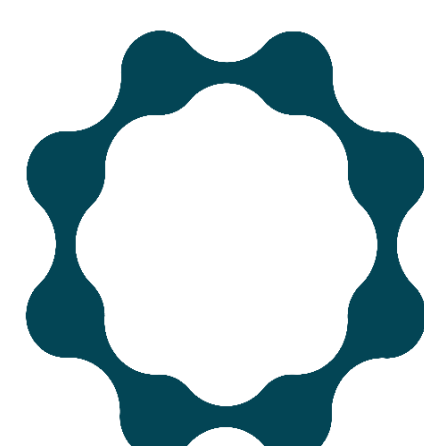
Developing ways to securely collect and analyse real-world cancer data from multiple countries, in order to build larger patient cohorts and generate evidence that can inform decisions on cancer treatments and improve patient outcomes.

- The pilot contains two use cases: 1) Expanding Treatment Space; and 2) Managed Entry Agreements



Digital tools for remote monitoring, needs assessment, self-management, and supportive care

Developing and testing digital tools to support the remote monitoring of patients' health status.



Personalised management of **cancer predisposition** across the patient journey

Integrating information on genetic predisposition into different stages of the patient journey, from screening to follow-up.

LB-ctDNA: Implementation of ctDNA guided decision-making across the patient journey

Assessing the use of blood-based tests to detect, monitor, or follow cancer in a less invasive way.

Let's stay in touch



japcm.coordination@sciensano.be



[Website of JA PCM](https://www.japcm.be)



[LinkedIn](#)



[BlueSky](#)



[Zenodo](#)